



UNIVERSAL TOUCHLESS ARMS





UNIVERSATILITY

Suitable for all types of exhaust pipes of cars, motorcycles and heavy vehicles.



SPEED

Just a few seconds to put in place and a single handed operation to store it away.



COMPACT NATURE

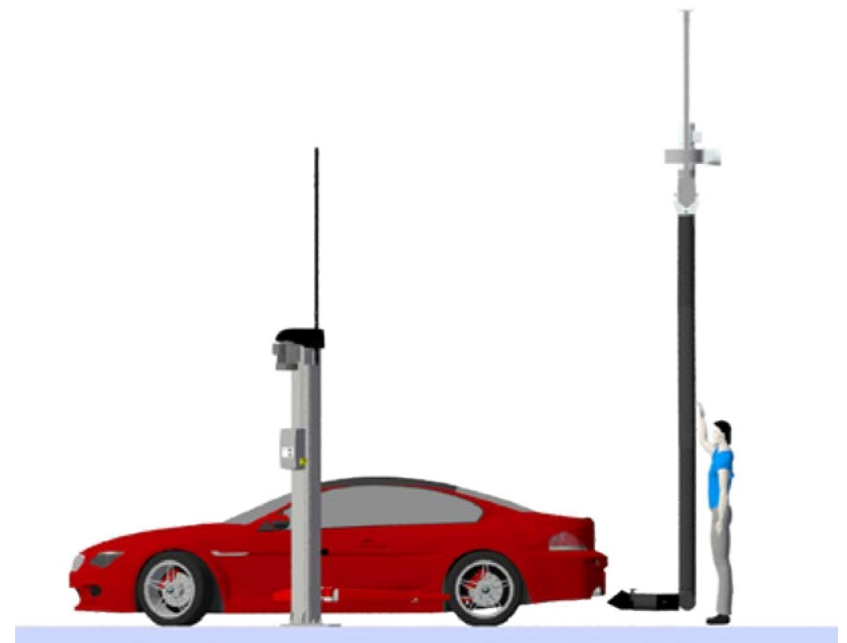
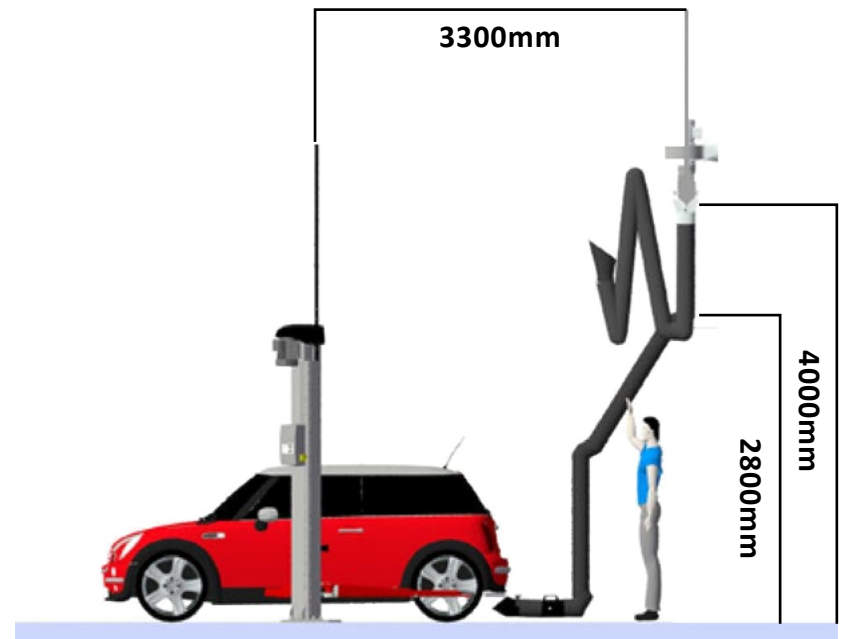
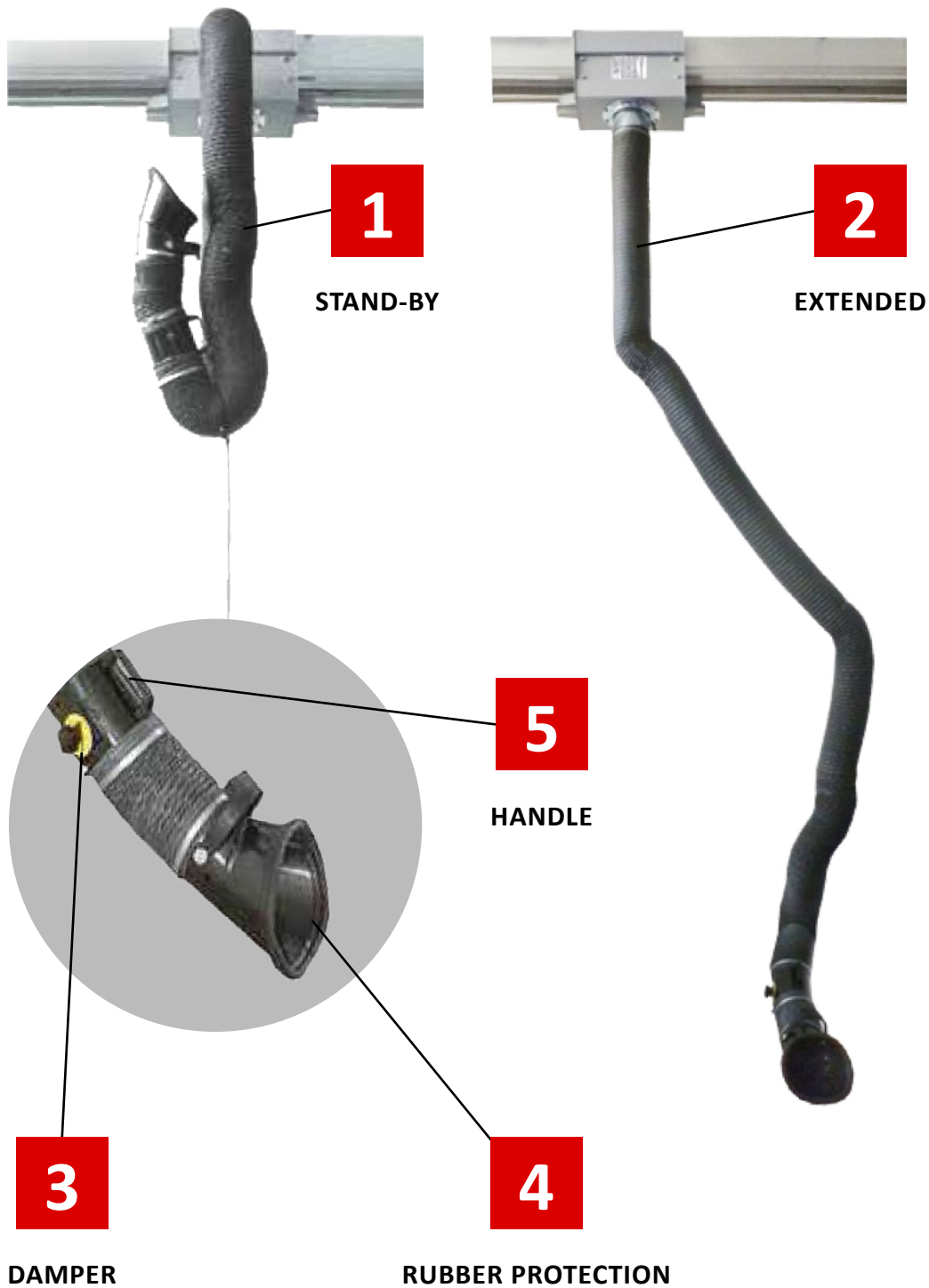
Gain space in your working area!

The GTL TOUCHLESS arm series is the most advanced solution for the extraction of the exhaust gases produced by all types of vehicles, regardless of the size and position of the exhaust pipes.

The GTL TOUCHLESS arms can be tailored to serve a specific work bay (stationary version for wall or high level mounting) or to cover multiple working bays (sliding track version). This solution is universal and eliminates the need of different adaptors or specialist nozzles for different exhaust pipes.

The extreme versatility, high extraction capacity and its adjustability makes the GTL touchless arm system the universal solution for the extraction of vehicle exhaust gases. When folded, the GTL arm is at 2,8 m above the floor, so as not to interfere with vehicles moving within the workshop.

In operating mode, the nozzle can reach up to 2,2 meters of reach in respect to the vertical axis of the fixing point. The GTL arm is available in two versions: sliding on track and stationary for installation to the wall or to the ceiling.



WHY CHOOSE THE UNIVERSAL TOUCHLESS GTL?

USER FRIENDLY

The technology of the Touchless system ensures faster, easier and ergonomic operation for exhaust extraction systems within workshops.

AIRFLOW

The GTL series arms ensure incomparable air extraction volume. Range varies from:

- 900 m³/h for cars
- 1400 m³/h for trucks and commercial vehicles.

DAMPER

The integrated airtight damper which is also resistant to high temperatures shuts down the extraction system when it's not needed, so avoiding energy wastage from the heating and air conditioning systems.

MAXI NOZZLE

The considerable size of the nozzle (230x165 mm) ensures complete extraction of fumes and toxic gases produced by vehicles.

FLEXIBILITY

Owing to the great flexibility of the arm, extraction is still maintained even when the vehicle is lifted. Regardless of the position and height of the vehicle, the GTL can always reach the exhaust pipe.

VERSATILITY

The system reaches the rear of the vehicle even if the distance from the track reaches up to 2.2 meters. No matter where the exhaust pipes are situated on the vehicle the GTL series arms will also reach the lateral exhaust pipes.

ROTATION

The GTL series arms can rotate and be placed in whatever position to reach exhaust pipes even when the arm is perpendicular to the vehicle.

DURABILITY

The extraction nozzle are resistant to a constant temperature of up to 200 °C and the entire system can also work in cold, hot, humid or dusty work environment.

RELIABILITY



Both in stand-by and working mode, the joints are not under strain, which prevents their wear. The arm is easy to use, reliable and tested, made of aluminium and stainless steel, durable, anti-rust and immune to the corrosive action of the exhaust gases produced by vehicles.



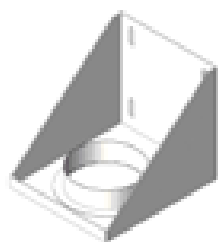
MULTI-BAY CONFIGURATION

CODE	APPLICATION	LENGTH	MAX m3/h	MAX TEMP	
GTL-125		4.5m	900	200°C	GAT1-R
GTL2-125					GAT2-R
GTL-160			1400		GAT1-R
GTL2-160					GAT2-R

SINGLE-BAY CONFIGURATION

CODE	APPLICATION	LENGTH	MAX m3/h	MAX TEMP
GTL-125-A		4.5m	900	200°C
GTL-160-A			1400	

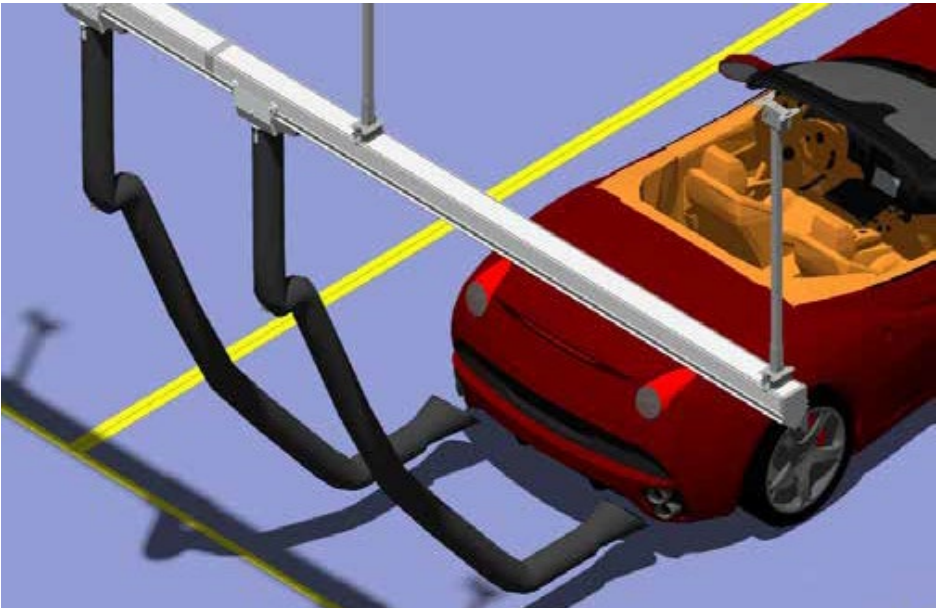
ACCESSORIES



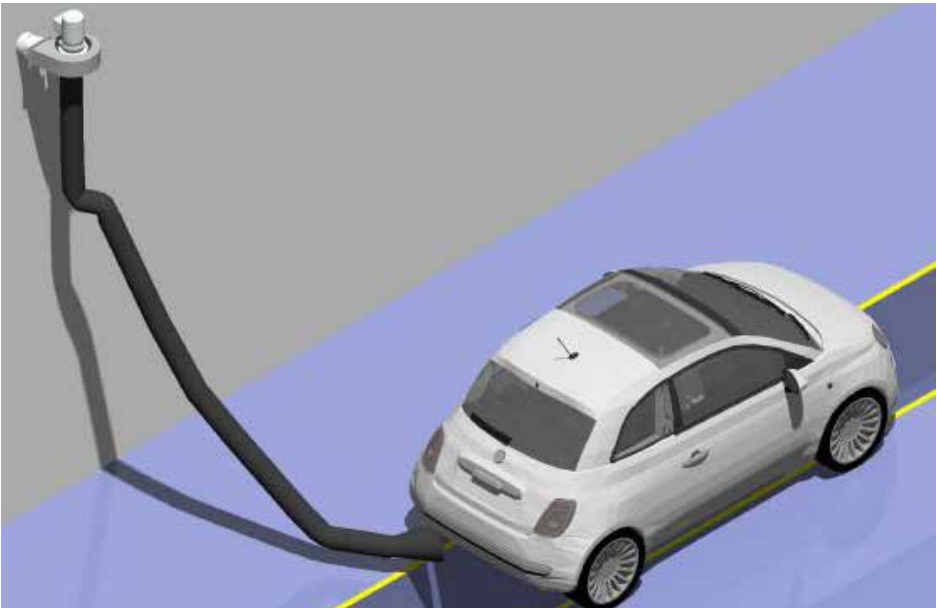
GTL160A-WB
WALL BRACKET



GTL160A-WB
WALL BRACKET



Multi-bay Configuration Example



Single-bay Configuration Example



MAIN OFFICE: T.R BULLWORTHY LTD. UNIT 7, MANOR BUSINESS PARK, WOODFORD HALSE, NORTHAMPTONSHIRE, NN11 3UB



(01295) 768 373



enquiries@bullworthy.co.uk



www.bullworthy.co.uk